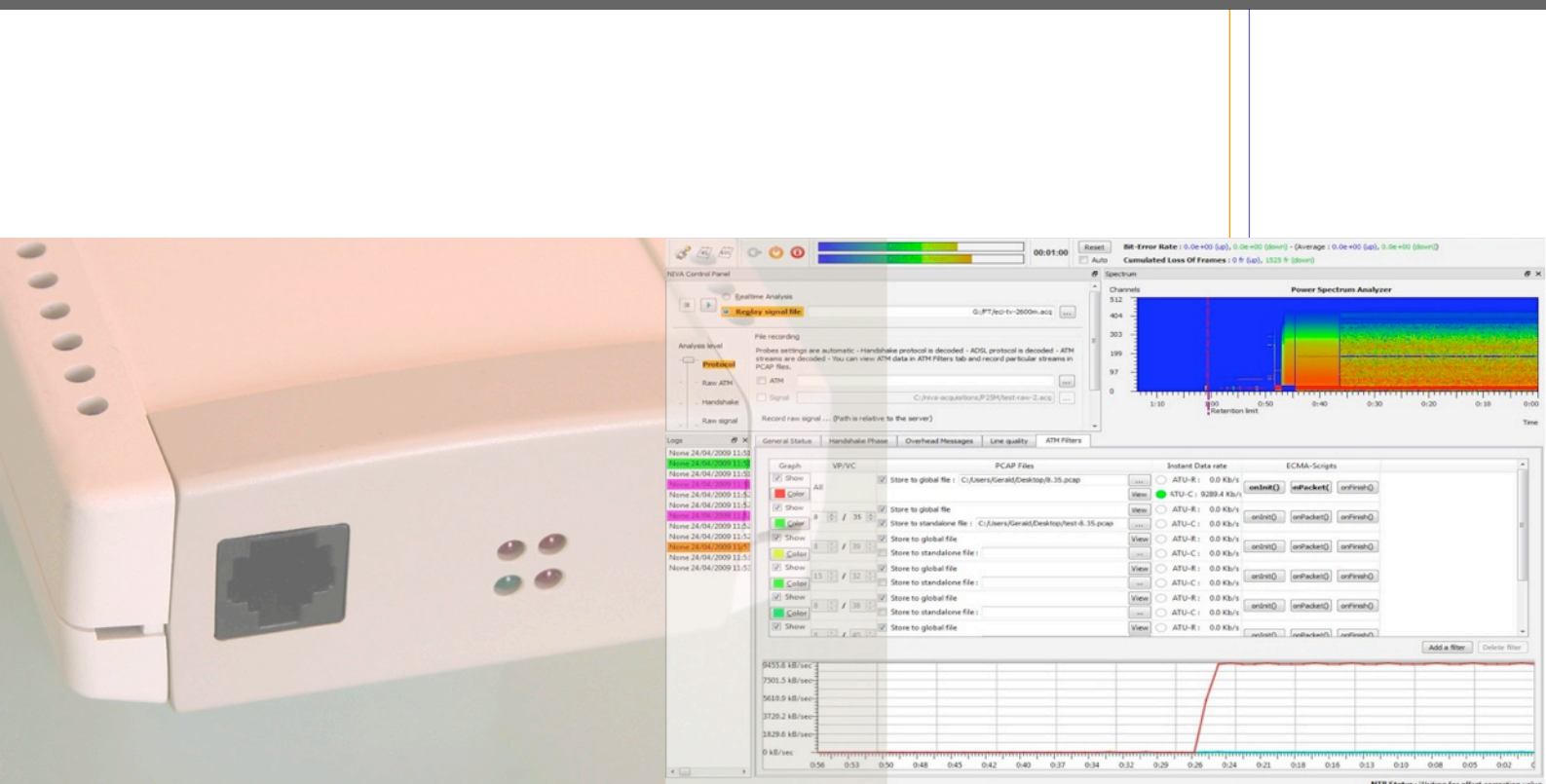


Real Time ADSL/2/2+ Analyzer

NIVA-ADSL/2/2+

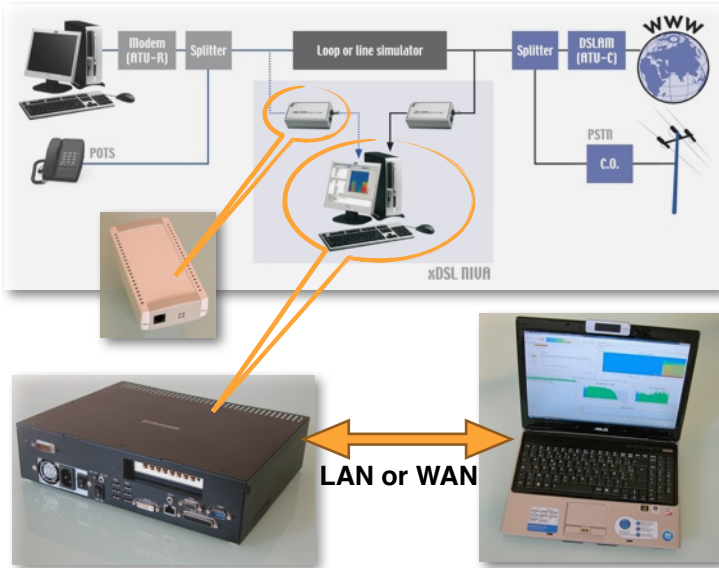


«Get and analyze in Real Time all the information exchanged between DSLAM and Modems among ADSL/2/2+ interfaces»



Since 1999, MT2 has been providing non intrusive and real time analyzers to telecommunication specialists. MT2 is proud to present the most powerful ADSL/2/2+ analyzer : The NIVA-ADSL.

Unique : Control securely the NIVA-ADSL wherever you are - quite near in the same room or from an other continent !



NIVA-ADSL, optimized for the real time, delivers immediately the result of the ADSL signals analysis as well as up & downstream data. This important feature provides a unique ease of use for day to day lab testing :

The GUI of the **NIVA-ADSL**, developed in partnership with customers, brings all the ease for an immediate or deferred analysis as well as the creation of reports. Its use is simple and intuitive, with a clear and complete data presentation.

Its Client-Server architecture provides the highest flexibility to third party tools integration and remote control. The «Kernel Net Discovery» allows to control different **NIVA-ADSL** through the same GUI.

Each event is time-stamped accurately. With the NTP option the accuracy is better than 1ms and the time information is absolute.

Vu meters and spectrograph make **NIVA-ADSL** a lively monitoring instrument. Powerful filtering of data is able to feed different pcap files at the same time. Moreover, the data files (pcap format) can be used during their generation.

NIVA-ADSL is the best choice for interoperability tests as well as for performance measurements in R&D labs and service quality valuation of ADSL/2/2+ links for Chipset or Equipment manufacturers and for service providers (TELCO or CLEC).

NIVA-ADSL Advantages

Truthful monitoring

- Monitors ADSL streams from DSLAM and Modem
- No ADSL-specific chipset
- One or two tap points (Lab or Field)
- Non intrusive, high impedance probe(s)

ADSL/2/2+ protocol analysis

- According to G.992.1/3/5, G994 (Ghs), T1-413 and more.
- Native real time
- Specific handshake analysis with conformance indications
- Overhead messages analysis
- Complete XML reports generation

Upper layer decoding

- Unique filtering according to VP/VC & IPLevel thanks to an intuitive syntax.
- Precise time-stamping (NTP option)
- Realtime interfacing with third-party service-level tools.
- PCAP file format storage for offline analysis

Graphical User Interface

- Local or remote control through TCP/IP (Client-Server)
- Clear, concise & User Friendly GUI
- Linux/Windows support

Specifications

High Impedance probe

Dimensions : 160mm(D) 82mm(W) 37mm(H)
Weight : 220g

PC

Many computers can satisfy the needs for NIVA-ADSL in terms of power and hardware capabilities. Contact MT2 for more information. NIVA-ADSL runs on Windows or Linux.

