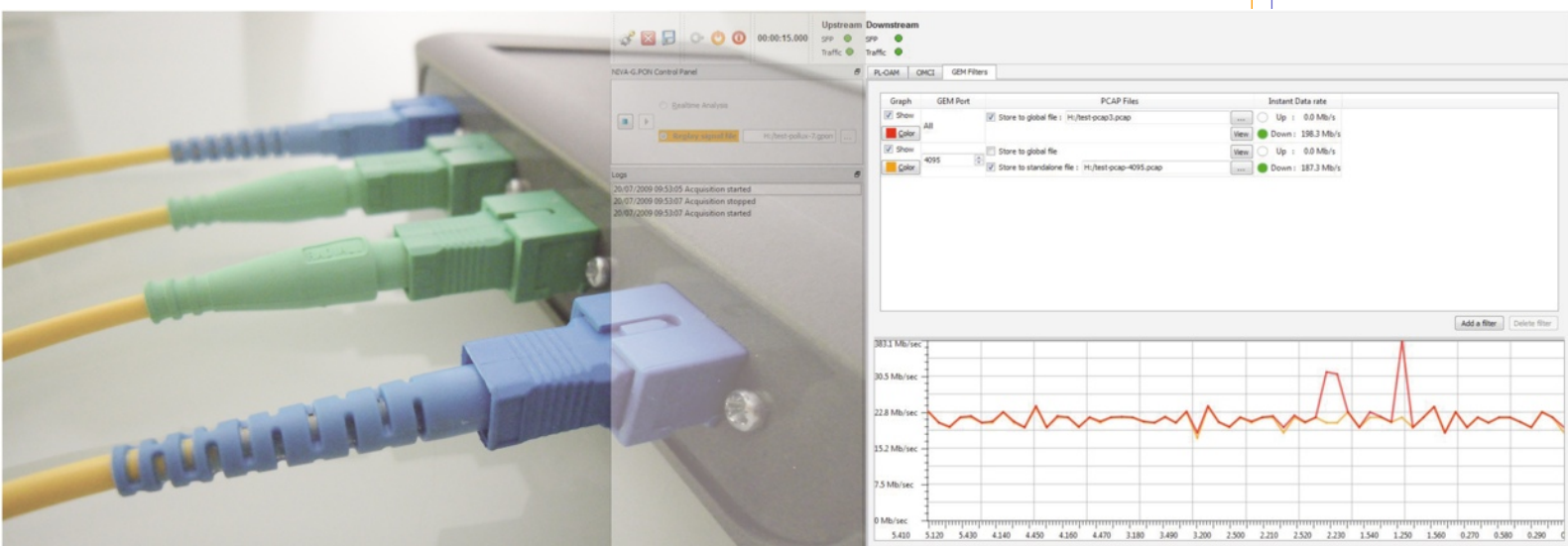


# Real Time FTTH-GPON Analyzer

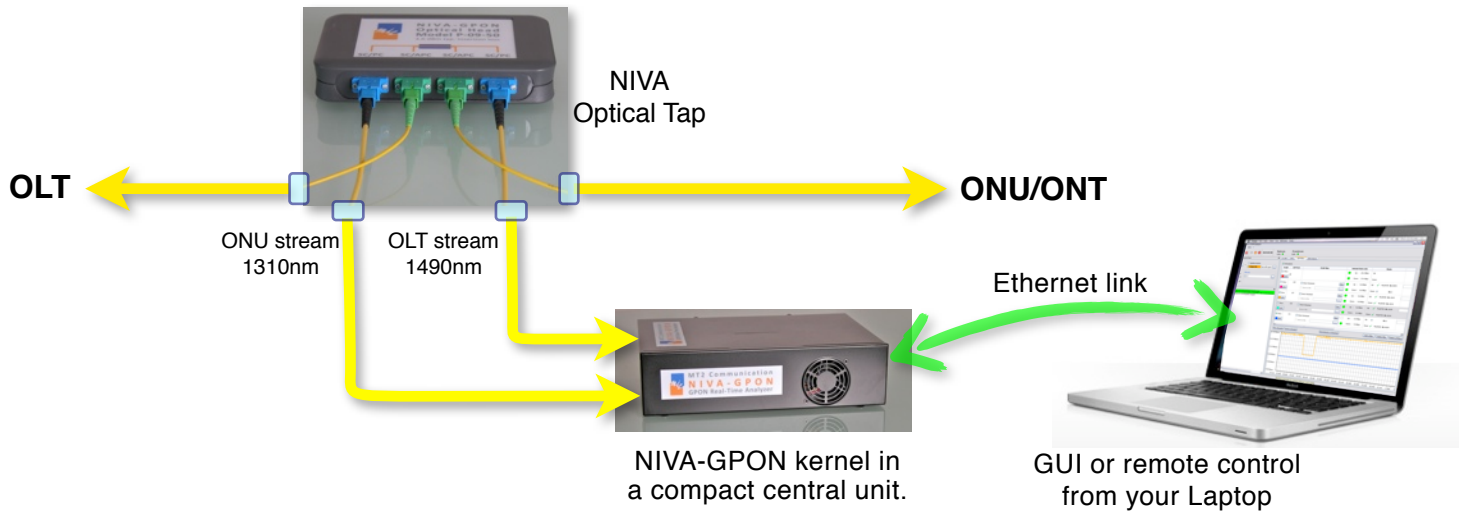
# NIVA-GPON



«Monitor and analyze in Real Time  
all the information of a GPON link»



Since 1999, MT2 has been providing non intrusive and real time analyzers to telecommunication specialists.



**MT2 NIVA-GPON**, optimized for the real time, delivers immediately the result of the GPON signals analysis. This important feature provides a unique ease of use for day to day lab testing.

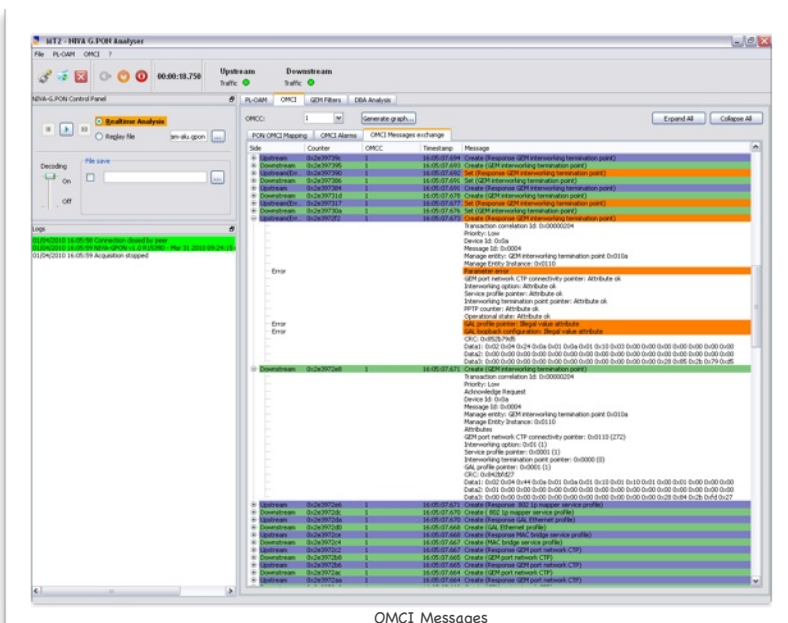
**The GUI**, heir of the famous GUI of the **MT2 NIVA-ADSL**, brings all the ease for an immediate or deferred analysis as well as the creation of reports. Its use is simple and intuitive, with a clear data presentation.

**The fine and complete OMCI&PLOAM messages analysis** points out the **MT2 NIVA-GPON** as a complete tool for performance analysis, standard compliance and interoperability tests.

**Its Client-Server architecture** similar to that of the **MT2 NIVA-ADSL**, the most powerful ADSL/2/2+ analyzer on the market, provides the highest flexibility to third party tools integration and remote control.

MT2 also introduces the concept of **separate optical head**. This approach allows, by letting optical heads in situ on the fiber, to have non intrusive tapping points available at any time.

## A perfect tool for GPON equipment validation !



- No GPON-specific chipset.
- Accurate data recovery for upstream bursts.
- Decoding according to ITU G.984.1/2/3/4 standards.
- **Deep analysis** of exchanges for **PLOAM and OMCI messages**, with errors highlighting.
- **Remote control** through TCP/IP, allowing automated testbench.
- **DBA analysis**, follow-up of upstream bandwidth allocated for each ONU/Alloc-ID.
- **Optional raw data recording**, for offline analysis/replay.

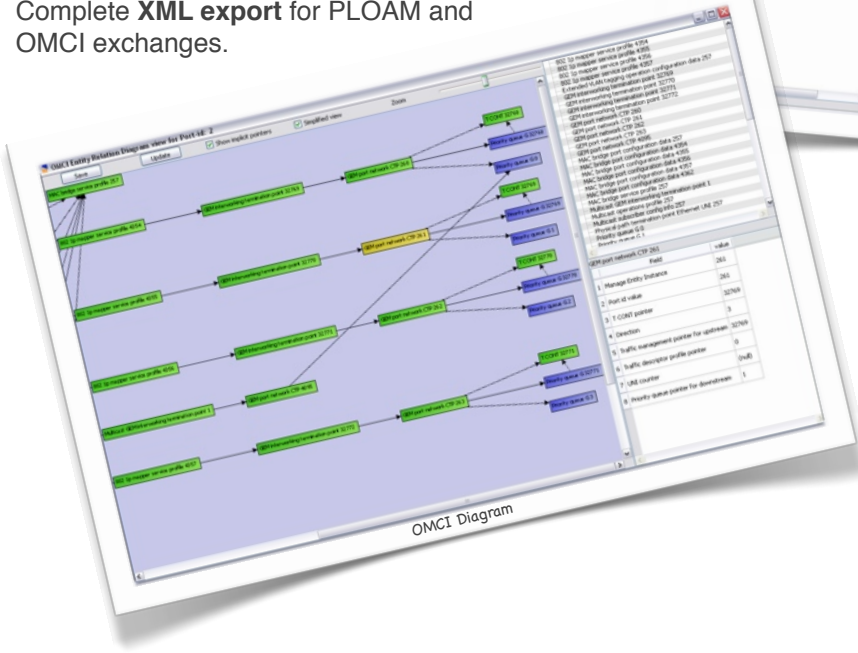
### MT2 Communication

9, Rue Vincent d'Indy  
 07300 - Tournon - France  
 Tel : +33 475 079 936  
 Fax : +33 475 079 931  
 e-mail : contact@mt2.fr  
 Web : www.mt2.fr

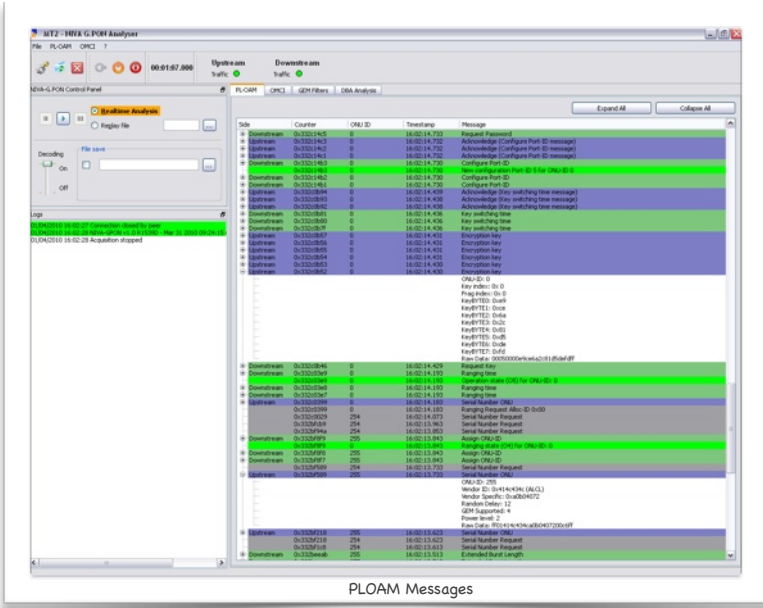


# The comfort of a Real Time monitoring tool for Interop testing !

- Native Real-Time acquisition and decoding.
- Simple/Clear GUI, **Plug and play**, no calibration setup.
- **Immediate monitoring** of the PON events (ONU ranging, authentication, OMCI MIB setup ...).
- **OMCI diagram generation** for browsing the actual MIB in place.
- **Automatic discovery of GEM ports and VLAN-IDs**, with bandwidth graph.
- **Ethernet Data Replication** for IP-level analysis.
- Complete **XML export** for PLOAM and OMCI exchanges.



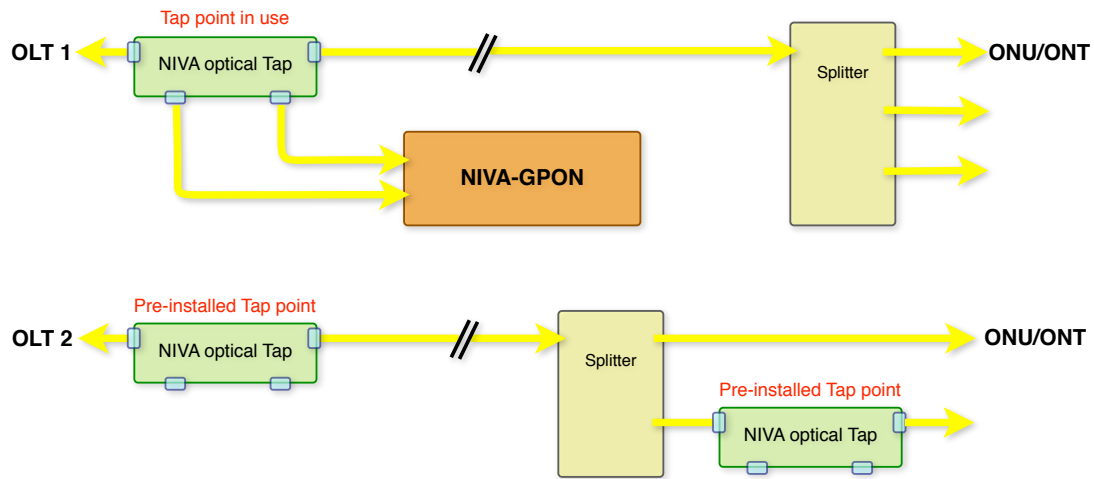
## So useful for field expertise & troubleshooting



- Completely **passive optical tap** taking place at ONT or OLT side.
- Follow-up of **OMCI alarms**.
- **Filtering** of PLOAM and OMCI messages according to types and ONU-ID.
- IP-level **export to PCAP files**, including powerful filtering.
- Ease of transport (**compact appliance**), and remote control from a laptop.

**MT2 Communication**  
 9, Rue Vincent d'Indy  
 07300 - Tournon - France  
 Tel : +33 475 079 936  
 Fax : +33 475 079 931  
 e-mail : contact@mt2.fr  
 Web : www.mt2.fr





**Unique** : Separate Optical Heads allow Pre-installed Tap points for future non intrusive connexion of the NIVA-GPON.

As well as for performance measurements, service quality valuation or troubleshooting of GPON links,  
**MT2 NIVA-GPON is the best choice for :**

- Equipment validation,
- Interoperability tests,
- Field expertise,

For chipset or equipment manufacturers and for service providers (TELCO or CLEC).

## Choose the model you need

- ☉ If you are focused on PLOAM & OMCI data, NIVA-GPON STARTER is for you .
- ☉ If you also need to work with IP data of a GEM-Port, you have to look for the NIVA-GPON PREMIUM.
- ☉ A NIVA-GPON STARTER can be upgraded to PREMIUM. It is also an easy way to spread your investment.

| Function                                  | MT2 NIVA-GPON Model | NIVA-GPON STARTER | NIVA-GPON PREMIUM |
|---|---------------------|-------------------|-------------------|
| <b>PLOAM Analysis</b>                     |                     | ✓                 | ✓                 |
| <b>OMCI Analysis</b>                      |                     | ✓                 | ✓                 |
| <b>GEM Analysis &amp; Data extraction</b> |                     |                   | ✓                 |
| <b>DBA Analysis</b>                       |                     |                   | ✓                 |

### Optical Head

Dimensions : 150mm(W) 100mm(D) 30mm(H)  
 Weight : 150g

### PC

Many computers can satisfy the needs for NIVA-GPON in terms of power and hardware capabilities. Contact MT2 for more information. NIVA-GPON runs on Windows or Linux.

### MT2 Communication

9, Rue Vincent d'Indy  
 07300 - Tournon - France  
 Tel : +33 475 079 936  
 Fax : +33 475 079 931  
 e-mail : contact@mt2.fr  
 Web : www.mt2.fr

